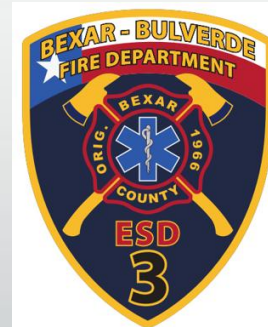


Bexar County Emergency Services District No.3

Bexar-Bulverde Fire Department



Jerry Bialick, MBA CPCU
Executive Director

Our Mission Statement

"To Provide Professional Emergency and Rescue Services That Protect Lives and Property While Promoting Community Safety Through Education and Awareness."



What is an ESD?

- An ESD, or Emergency Services District, is a governmental taxing body formed within the unincorporated areas of the counties within Texas.
- The primary function of an ESD is to provide fire and rescue services within an assigned area or district directly or by contract.
- Bexar County's 12 ESDs fall under the jurisdiction of the County Commissioner's Court. **BCESD No. 3** is within Commissioner Grant Moody's Precinct 3.
- **ESD's are funded by taxing property valuation and by Texas law are capped at setting an ad valorem tax rate of \$.10/\$100 valuation on property within their district.**
- **With voter approval, ESDs may also collect state sales tax up to 2% on purchases within their district.**



Bexar County Emergency Services District No.3

- Founded in 2005, BCESD No.3 was one of the earliest ESDs to be created in Bexar County. BCESD No.3 is led by 5 commissioners.
- Current Commissioners:
 - Ray Wilkinson, President
 - David Diharce, Vice President
 - Robert Moss, Treasurer
 - John Kirk, Asst. Treasurer
 - George Drew, Secretary
- Jerry Bialick, MBA CPCU – Executive Director
- Frances Miller – Financial Manager
- Admin Staff: Tiffany Brawith – HR, Vivian Sample – Admin Asst., Stacy Shults – Admin Asst.

ESD3 CONTACT INFORMATION

Mailing Address

25408 Canyon Golf Road
San Antonio, TX 78260

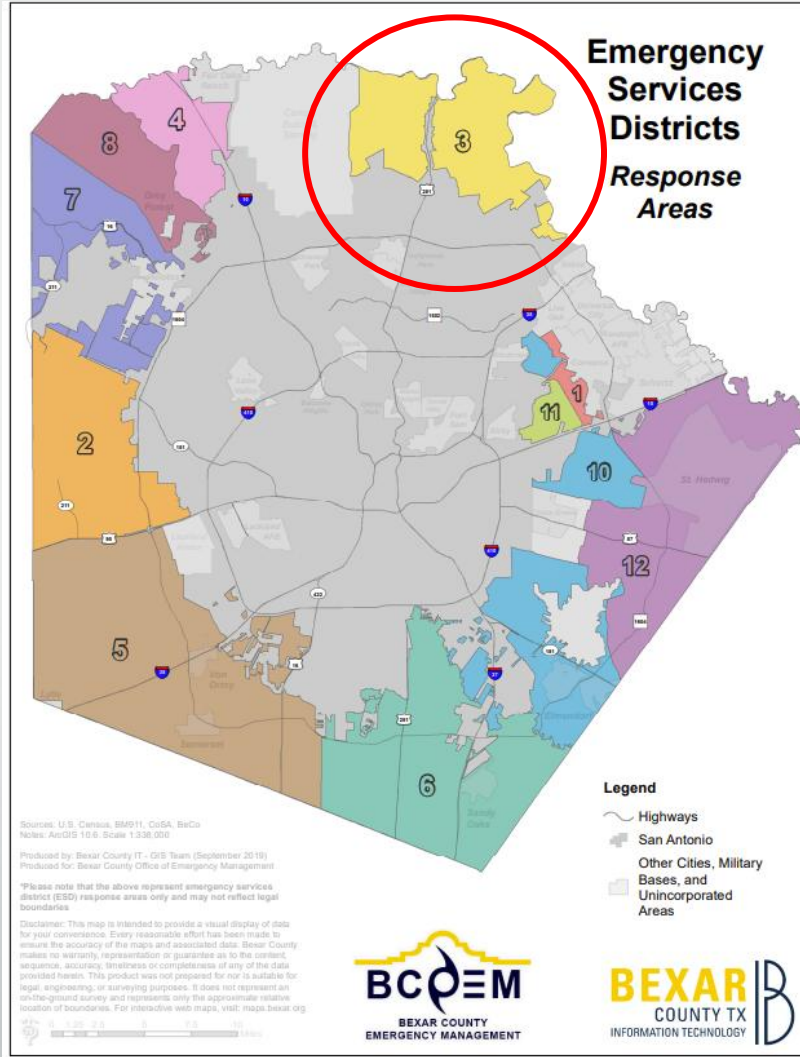
Phone: : [210-272-0353](tel:210-272-0353)



**EMERGENCY SERVICES
DISTRICT #3**

BCESD No.3 District

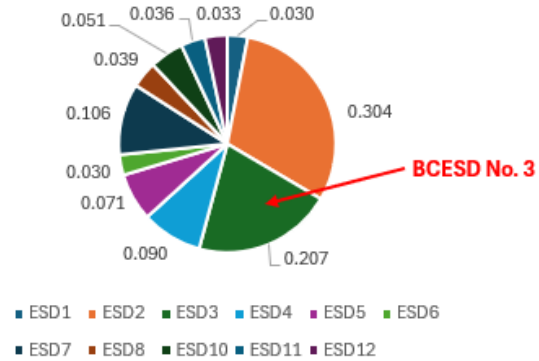
- 54.3 Square Miles.
- Population: 77,698.
- \$13.2B in Property Value.
- 3 School Districts with 10 schools.
- US HWY 281N corridor served by ILA with the COSA.



BC ESD Property Values/Tax Rates

ESD Percentage of Total Taxable Property Values

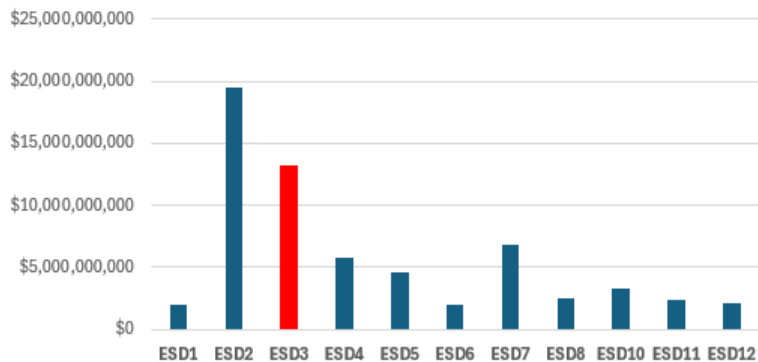
(Source: 2025 BC Tax Assessor-Collector)



BCESD No.3 is second highest in Total Taxable Property Values yet has the second lowest Tax Rate in Bexar County.

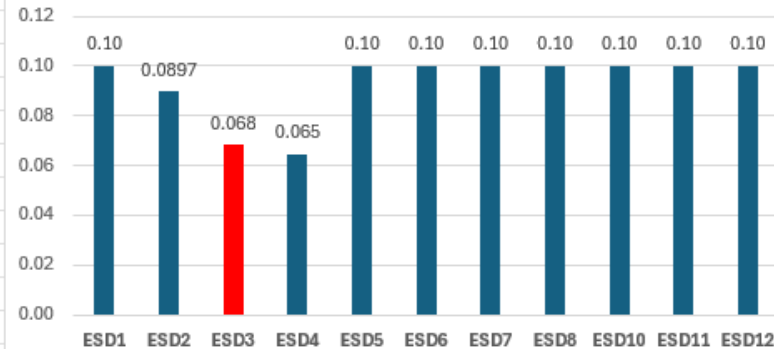
Total Taxable Property Values

(Source: 2025 BC Tax Assessor-Collector)



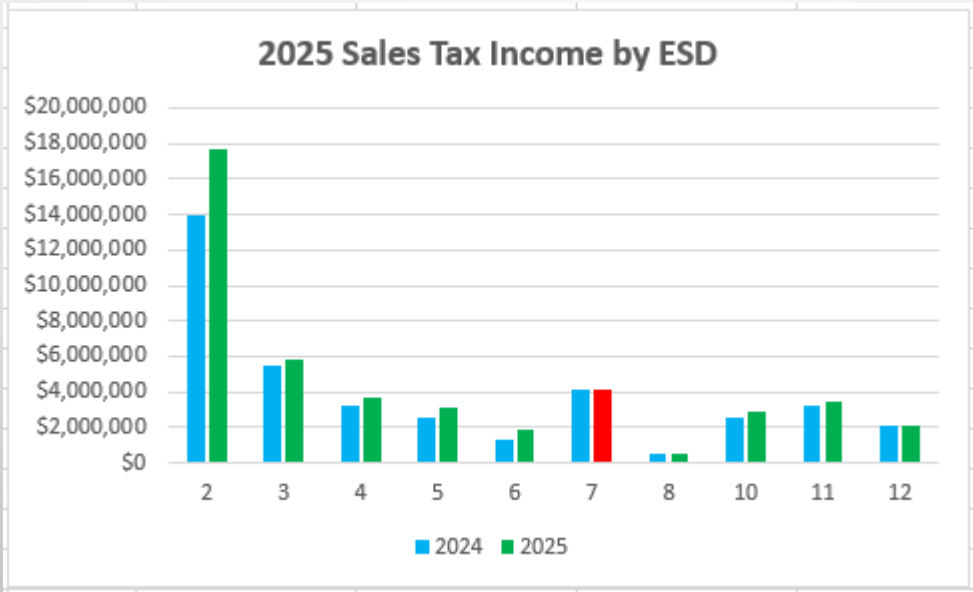
Ad Valorem Tax Rate

.10/\$100 Maximum Allowable Rate
(Source: 2025 BC Tax Assessor-Collector)



Sales Tax Revenue

- By law and with voter approval, ESDs may collect up to 2% in sales tax on purchases within their assigned districts.
- BCESD No. 3 relies heavily on individual consumer spending while other ESD's have significant commercial businesses that generate income.



BCESD No. 3 Budget, Revenue & Debt

- Revenue:
 - The established Ad Valorem Property tax rate is \$.0682/\$100. This is the second lowest tax rate in Bexar County. District property values total \$13,150,475,344*, which will yield approximately **\$8,968,624** in income in FY2026.
 - Sales Tax collection for 2025 exceeded **\$5,800,000**.
 - Investment income for FY 2025 was **\$993,822**.
 - Fee collection from COSA for US Hwy 281N Interlocal Agreement is estimated to be **\$321,733** for calendar year 2025.
- Budget:
 - The budget for fiscal year 2026 is **\$13,982,658**.
- Debt:
 - Long term debt of \$9,550,000 is for the loan to construct the new fire station.



* Source: Bexar County Tax Assessor-Collector.

BCESD No.3 and COSA Interlocal Agreement

- Background – In late 2016, as an effort to fend off full annexation of the District by the City of San Antonio (COSA), an agreement was reached with the COSA to only annex a corridor consisting of US Hwy 281N and areas within 1,000 feet of the highway.
- An Interlocal Agreement (ILA) was then established with the COSA that BCESD No.3 would continue to provide fire and rescue first responder services to the annexed area for an agreed annual sum and excess run fee. The agreement was for 5 years and was subsequently renewed for another 5 years in 2023. The ILA fee is adjusted annually based upon call volume.
- The Bexar-Bulverde Fire Department provides the fire and rescue fire responder services to the residents and commuters in the corridor under the direction of BCESD No.3 in accordance with the ILA. The San Antonio Fire Department also responds but due to the distance from their current stations to the corridor, significant delays may be encountered. The relationship between the BBFD and the San Antonio Fire Department (SAFD) is outstanding and the services of the BBFD have proven vital in providing prompt, professional services to those in need.
- This area will no doubt experience significant commercial growth for years to come and will continue to present challenges for service that will need review and possible amendments to the ILA.
- This ILA will generate a minimum of **\$321,733** in income for BCESD No.3 in 2025.

Bexar-Bulverde Fire Department (BBFD)



- Founded in 1966, the BBFD operates under BCESD No.3 and provides emergency fire and rescue services to the District. Officers and Firefighters are held to the highest level of continuing education and yearly exceed the minimum requirements of the Texas Commission on Fire Protection (TCFP).
- Full-Time: 77
- Senior Officers:
 - Dustin Beaudoin - Fire Chief
 - George Amen – Assistant Chief
 - Jeff Kirkpatrick, Jeff O’Leary, Jeff Cowan – Battalion Chiefs
 - Ruben Lopez - Training/Safety Battalion Chief

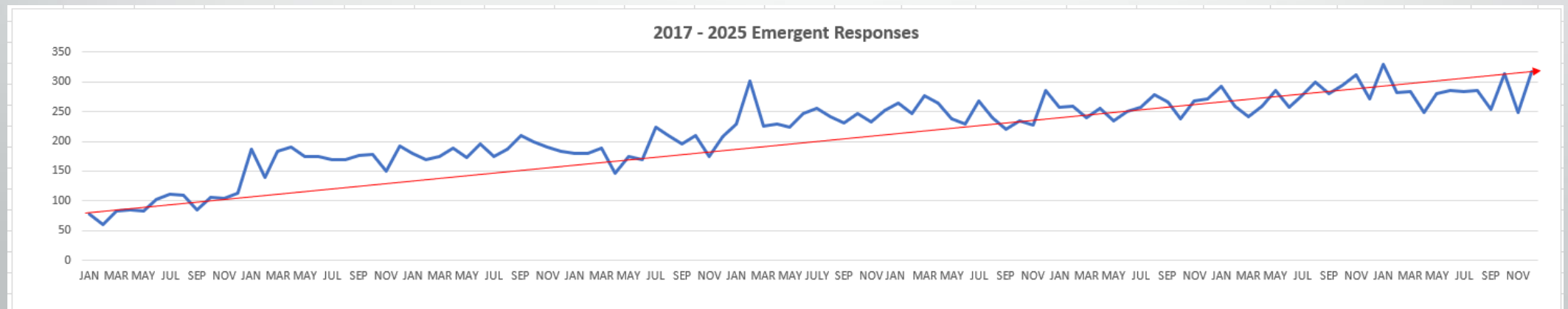
ISO Rating

- In December of 2020, BCESD No.3 was awarded the prestigious **ISO FPC Class 1** certification for superior training, manpower, apparatus, equipment, stations, communications, and water supply by the Insurance Services Office (ISO).
- The ISO FPC Class 1 rating has been achieved by fewer than 1% of fire departments nationwide. In the chart below, 41,177 departments were rated with only 348 earning the highest distinction. BCESD No.3 is one of them.

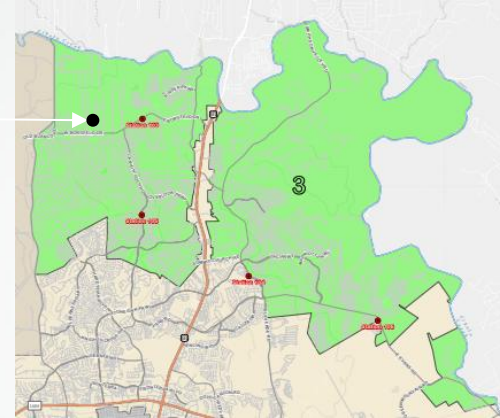


Emergent Call Volume

- As the District has grown dramatically in the last ten years, so has the demand for emergency services. Despite the call volume increase, the Bexar-Bulverde Fire Department (BBFD) has continually improved its on-scene response time.
- The BBFD responded to **4,275** calls in 2025. Emergent on-scene average arrival time from dispatch for 2025 was **6 minutes and 25 seconds**.



4 Fire Stations and Administrative Building



Station 103 – Built in 1966, Remodeled in 2020



Station 104 – Completed in 2007



Station 105 and Admin Office – Completed in 2019



Station 106 – Completed in 2022



Future Fire Station 103

- The current Station 103 is at the end of its serviceable life. Nearing 50 years old, it cannot support the requirements of a full-time fire department.
- The current structure is cramped, lacks adequate living space for a full complement of full-time firefighters, has no room for training or exercise, and lacks the space necessary for modern fire apparatus. This structure will be repurposed for the department's use.
- 5.0 acres of land was purchased for building a modern fire station with a state-of-the-art training facility. Also planned are sufficient conference rooms for training as well as use by the public for HOA or Scout meetings.
- Construction is underway. **Completion target is Oct 2026.** Total Project cost = >\$12M.



BBFD Apparatus

- The BBFD maintains a state-of-the-art fleet of modern fire and rescue vehicles to include:
- 2 – Ladder Trucks.
- 4 – Fire Engines.
- 2 – Water Tender Trucks.
- 1 – Heavy Rescue Truck.
- 3 – Type 5 Brush Trucks.
- 1 – Type 3 Brush Truck (Heavy).
- 4 – Rescue Squads.
- 1 – Polaris Wildland Vehicle.
- 4 – Command Vehicles.
- 2 – Utility Trucks.



Community Outreach

- Annual safety education visits to every school in the District.
- Annual Open House and Pancake Breakfast each October.
- Support neighborhood Firewise USA efforts.
- Annual testing of all public fire hydrants in the district.
- CPR classes.
- Host neighborhood HOA and Scout meetings in Stations.
- Annual participation in Johnson High School Shattered Dreams event.
- Annual participation in Pieper High School 9/11 Memorial Stair climb.
- Annual Santa Runs (Santa on a fire engine!) throughout the entire District.
- Participation in neighborhood National Night Out gatherings.
- Participation in the National Breast Cancer Foundation awareness.



BCESD No.3 Priorities

- Maintain superior fire and rescue services to the residents of the District.
- Secure sufficient revenue to ensure execution of the established Mission.
- Expand emergency services as necessary to accommodate the growing needs of the residents.
- Provide the best in Apparatus, Equipment and Fire Stations to the professional firefighters.
- Provide a competitive pay structure and excellent benefits to the employees.
- Continue to deepen the relationship with the residents through education and community involvement.

